

I N T R O D U C I N G

CEM-ROCK®
EXTREME FLOOR

B U I L D W I T H C O N F I D E N C E

W W W . C E M R O C K . I E

DISTRIBUTED BY





Introduction

Cem-Rock® eXtreme FLOOR is an eco-friendly, high strength magnesium cement board with safer, easier and faster application suitable for both interior and exterior use. It can replace traditional building boards and can be used as an alternative to chipboard, plywood, OSB, fibre cement board and calcium silicate board. Offering a fresh innovative building board the construction industry has been longing for. Best of all Cem-Rock® eXtreme FLOOR has the environment in mind and carries an A1 fire rating, tested to EN 13501 standard.





“Cem-Rock® will undoubtedly play a major role in a safer, easier, faster and more environmentally friendly construction future”

TOMMY O'NEILL
STEEL FORMED SECTIONS

Class A1 fire rated product

- No plywood, OSB or drywall panel can claim this.
- Releases water vapour during a fire event, helping to cool and contain the fire
- It can easily achieve up to 2 hour fire ratings
- The building board of dreams for fire officers

Strong and durable

- Stronger than timber boards
- Stronger than fibre cement products
- Lighter than fibre cement products
- Safe to work with
- Extremely user friendly
- Due to the aforementioned characteristics Cem-Rock® eXtreme FLOOR increases a buildings life span
- Easy to cut

Resistant properties

- Impervious to water
- Moisture resistant
- Dimensionally stable when wet
- Structurally stable when wet
- Does not feed mildew
- Does not rot or mould
- Termite resistant
- Contains zero foodstuff

Environmentally friendly

- Contains no formaldehyde
- Contains no fly ash
- Contains no toxins
- Does not off-gas
- Carbon neutral product
- Completely recyclable
- Captures CO₂ during the curing process
- Low energy manufacturing process
- No carcinogenic dust
- Ideal for chemically sensitive people in the home environment

Cem-Rock® eXtreme FLOOR Product Datasheet

The perfect floor board from low- to high-rise commercial and residential properties, providing excellent acoustic and structural characteristics.

Physical properties	
Nominal Dimensions	2400x1200x20 mm
Average density	1100 kg/m ³
Average weight	22 kg/m ²
Colour	Grey / White
Fire classification (EN 13501-1)	A1
Combustibility (EN ISO 1182)	non-combustible
Release of dangerous substance (EN 717-3; ISO 22262-1; ISO 9680)	No detected
Applications (BS EN 1991-1-1:2002; tested to BS EN 1195)	Category A, B, C1, C2, C4, C5, D
Fire resistance classification (BS EN 13501-2; tested to BS EN 1365-2)	REI 45

Test results (BS EN 1195)

Test	Result
Point Load (F _{max} Mean)	4.45 kN
Point Load (F _{max} Characteristic Q _k)	3.68 kN
Uniformly Distributed Load q _k	> 10.14 kN/m ²
Soft Body Impact (no visible damage)	135 J

* Capacity based on average peak test load divided by a safety actor of 2.5.
* Deflection limits not the failure mechanisms in spans listed.



Characteristics

Cem-Rock® eXtreme FLOOR has been developed to rapidly improve flooring technology. Its fire, water, mold and mildew resistance properties far outweigh any competing products like plywood or OSB floor sheathing.

Features:

- Fire protection
- Sound absorption
- Water proof
- No floor deflection

Properties:

- Nonhazardous
- No formaldehyde content
- No crystalline silica content

Advantages:

- T&G technology allows for easy installation
- Outperforms plywood or OSB
- denser than plywood or OSB
- easy to cut and screw

Fire resistance - REI 45

- 45 minutes fire resistance when used in conjunction with timber web joists



Installation

Boards to be installed perpendicular to floor framing members. Nail or screw fasteners can be used. Fasteners to be compliant with applicable building codes. Joints between the boards to be glued. Boards can also be glued to the joists using appropriate approved glue.



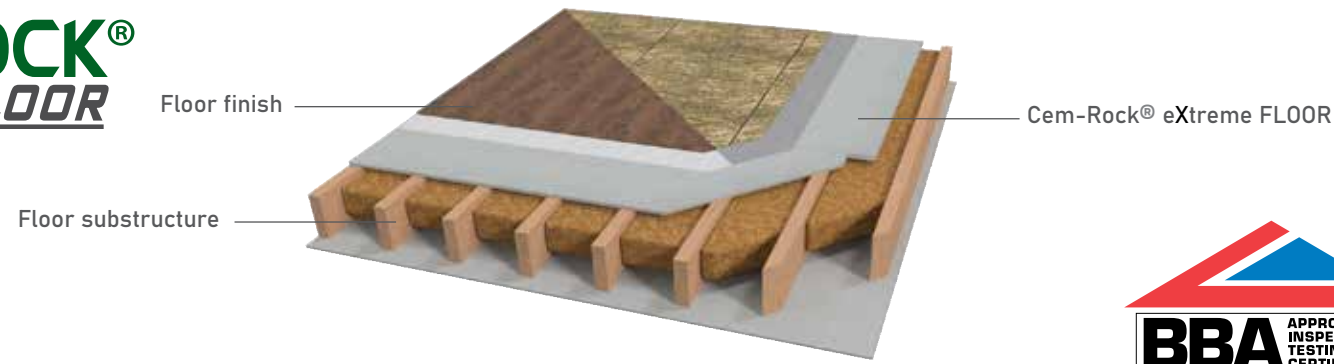
CEM-ROCK®
EXTREME FLOOR

STRONGER
SAFER
FASTER

Cem-Rock® eXtreme FLOOR represents a quantum shift in flooring technology. It has been designed to replace plywood and OSB floor sheathing.

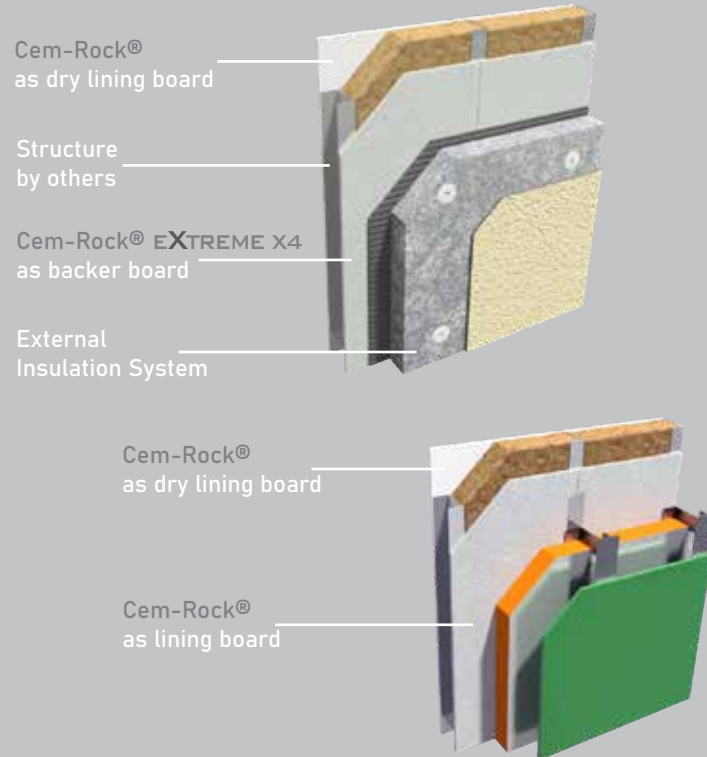
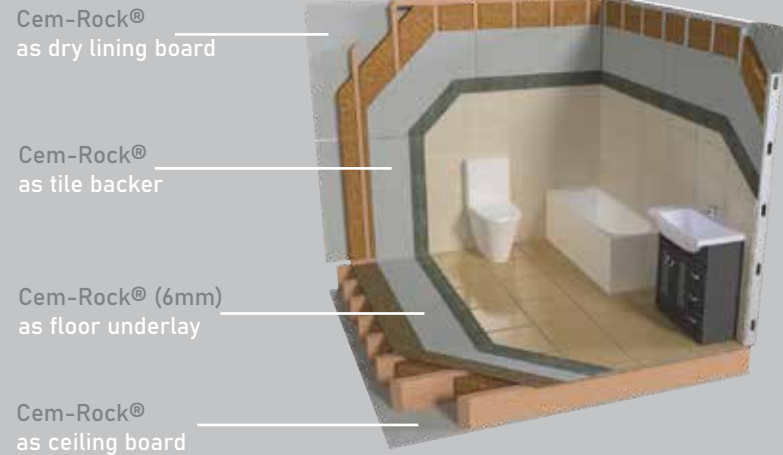
Cem-Rock® eXtreme FLOOR provides a superior flooring solution that is unaffected by environmental exposure during construction.

Cem-Rock® eXtreme FLOOR is reducing the risk of fire, is not affected by adverse weather conditions, and drastically improves your building's structural performance.

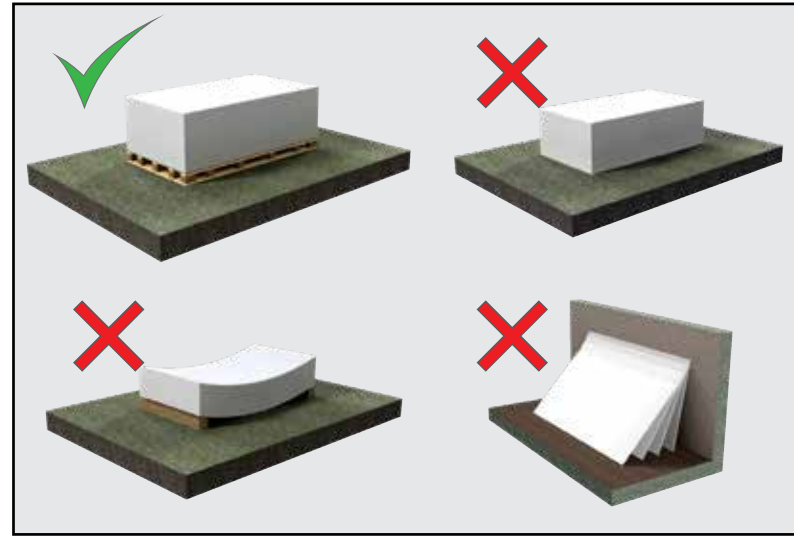


Boards available in

CEM-ROCK® range



Storage



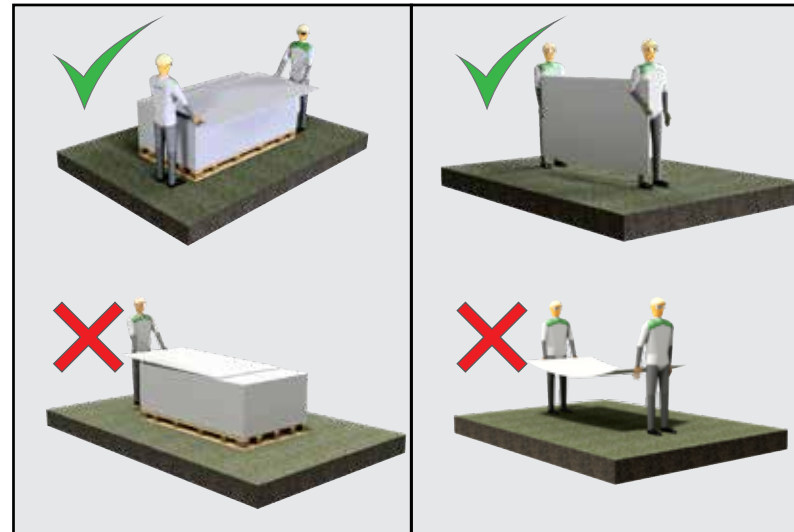
The base to store the boards has to be strong enough to support them.

Do not store the boards directly on the ground. Do not store the boards vertically.

Boards have to be protected from moisture before installation.

If the boards get wet, they have to be dried before they are installed.

Handling



Boards must be carried upright.

Take care not to damage corners and edges when setting the board down.

Two person handling only.

Cutting

Cem-Rock® eXtreme FLOOR to be cut using:

- Diamond disk grinder
- Concrete disc grinder
- Diamond blade saw
- Jigsaw with carbide blade

Safety measures:

Appropriate PPE equipment to be worn when working with Cem-Rock® eXtreme FLOOR boards.

Fixings

Only rust proof, alkali resistant fixings to be used to install Cem-Rock® eXtreme FLOOR boards. Wood and gypsum screws are not recommended.

Technical details

Cem-Rock® eXtreme FLOOR building boards come equipped with all the appropriate certifications and application procedures.

For any technical queries or to receive the appropriate method statements please contact our technical team at Greenspan.

B U I L D W I T H C O N F I D E N C E

C H O O S E

CEM-ROCK[®]
EXTREME FLOOR

W W W . C E M R O C K . I E

Greenspan UK Ltd.

Office 2, 91 Main Road
Meriden, Coventry
West Midlands, CV7 7NL

Tel: +44 (0) 121 517 0957

E-mail: sales@greenspan.co.uk

Web: www.greenspan.co.uk



Greenspan System Sales Ireland Ltd.

Ballyhahill, Co. Limerick, Ireland

Tel: +353 69 82222

E-mail: sales@greenspan.ie

Web: www.greenspan.ie